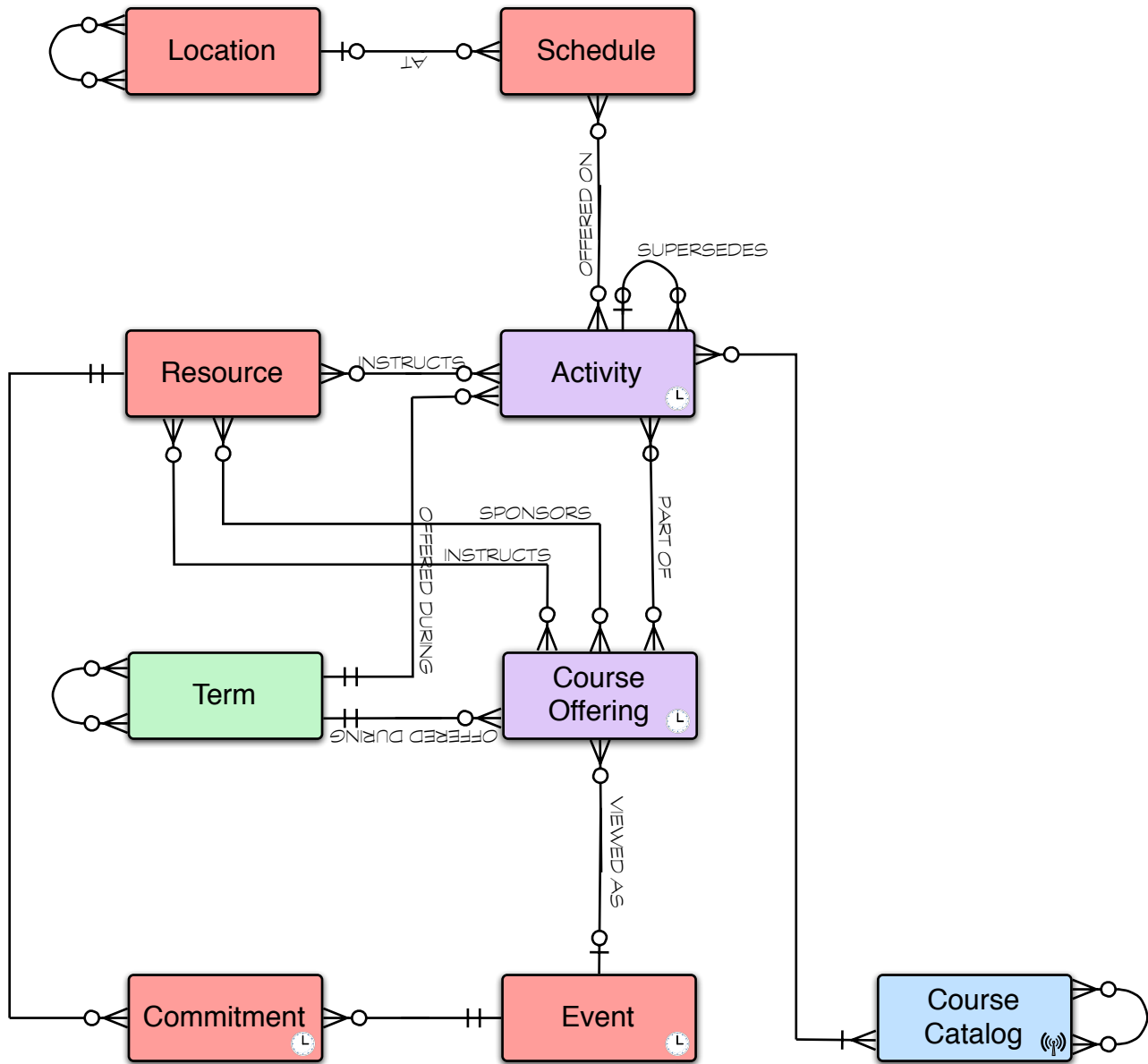


# OSID COURSE MODEL (SCHEDULING)



**Term**

```

DisplayText getDisplayLabel()
DateTime getOpenDate()
DateTime getRegistrationStart()
DateTime getRegistrationEnd()
DateTime getAddDropDate()
DateTime getFinalExamStart()
DateTime getFinalExamEnd()
DateTime getCloseDate()
    
```

**CourseOffering**

```

DisplayText getTitle()
string getNumber()
decimal[] getCredits()
DisplayText getPrerequisitesInfo()
boolean requiresRegistration()
cardinal getMinimumSeats()
cardinal getMaximumSeats()
string getURL()
DisplayText getScheduleInfo()
    
```

**Activity**

```

boolean requiresRegistration()
cardinal getMinimumSeats()
boolean getMaximumSeats()
Duration getTotalTargetEffort()
boolean hasContact()
Duration getTotalTargetContactTime()
Duration getTotalTargetIndividualEffort()
boolean isRecurringWeekly()
Duration getWeeklyContactTime()
Duration getWeeklyIndividualEffort()
    
```

LEGEND

